

Western Parkland
City Authority

INTEGRATED LOGISTICS HUB AIRFREIGHT INTERFACE CONCEPT

Australia's newest place for 24/7 trade

AN INVITATION
TO SHARE
YOUR IDEAS





Jennifer Westacott AO
Chair, Western Parkland City Authority

Foreword

I am honoured to chair the Western Parkland City Authority, which is tasked with coordinating growth of the Western Parkland City.

Australia is set to be at the centre of the growth of the middle class in Asia. This will open doors for Australian agriculture producers.

With the 24/7 Western Sydney International (WSI) Airport, there are huge opportunities for NSW and the Western Parkland City to take advantage of this growth.

Fresh produce, value-added products, highly and specialised product will be able to move overland into these markets in record time.

Acknowledgement of Country

The Western Parkland City Authority acknowledges more than 60,000 years of continuous Aboriginal connection to the land that makes up New South Wales.

Since time immemorial, Aboriginal people have managed, cultivated and cared for the landscape where Greater Sydney was established and continues to grow. Aboriginal people hold profound knowledge, understanding, obligation and custodianship of the landscape.

The Western Parkland City Authority acknowledges the traditional owners of the lands that include the Western Parkland City and the living culture of the traditional custodians of these lands.

Anyone with a serious eye on expansion opportunities in global and domestic trade by air, must be making strides to gain a foothold in the Aerotropolis.

The Agribusiness Precinct, and other parts of the Aerotropolis, offer proximity to the entry and exit points of the new 24/7 WSI Cargo Precinct.

There are so many opportunities for market leaders to create a best-in-class air freight interface, to move Australia's best products to Asian markets on 10-hour flights.

There will be no better place to trade globally in Australia. There will be no better time for investors seeking new opportunities. No better moment for industry and landowners to partner.

We're asking for your ideas on how best to make this happen, through an open Request for Information (RFI) process.

We will help connect great ideas, and those ready to seize the opportunities.

Jennifer Westacott AO
Chair, Western Parkland City Authority

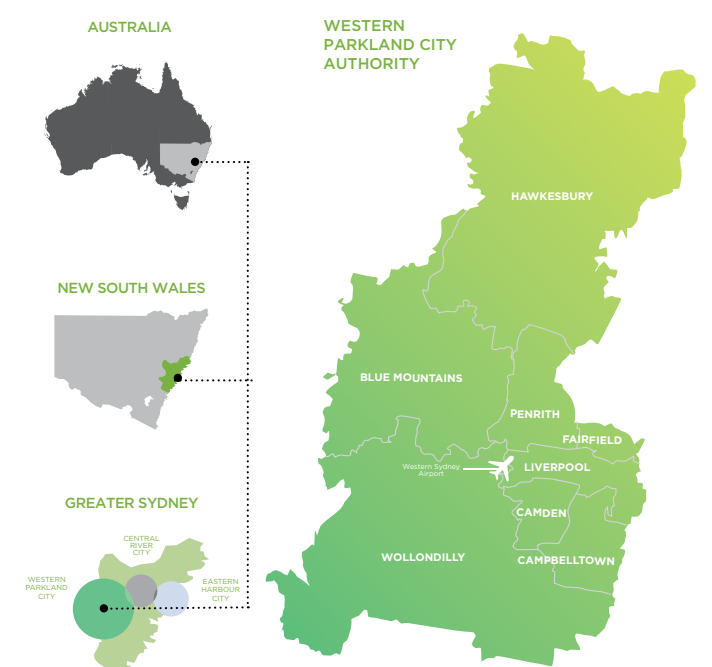
About the WPCA and what we do

The **11,000-hectare Western Sydney Aerotropolis** will surround the 24/7 Western Sydney International (Nancy-Bird Walton) Airport, contribute towards the **200,000 jobs target** for the Western Parkland City and support growth in the regions of New South Wales.

The Western Parkland City Authority is responsible for **coordination, delivery and investment attraction** across the Western Parkland City, in collaboration with State and Commonwealth government agencies and local councils.

Within the Aerotropolis, one of the key focus areas is the **Agribusiness Precinct**, adjacent to the **Airport**, where fresh and value-added Australian food production will move from farm gate to booming global export markets in the Asia-Pacific.

Promoting investment, delivery and coordination by working collaboratively with the Commonwealth and State governments, local councils, landowners, the local community and industry stakeholders is a key role for the Western Parkland City Authority.



An invitation to share your ideas

A '36-hour farm gate to plate' supply chain operation in the WPC is capable of servicing more than half the world's population within a 10-hour flight from WSI and will supercharge opportunities for NSW importers and exporters.

The first flights will start from the **curfew-free** WSI Airport in 2026 with cargo aboard including fresh and value-added produce, pharmaceuticals, and high value manufacturing components.

We know that Australian products are highly valued throughout the Asia-Pacific, and together we can realise the bold idea of a **'36-hour farm gate to plate'** offering in New South Wales. In five years, we'll be capable of servicing half the world's population within a 10-hour flight from the WSI, right here in the Western Parkland City.

The curfew-free operations at the new WSI Cargo Precinct, with 220,000 tonnes p.a. of cargo handling capacity at opening, serviced by high-quality road freight routes, will provide an unrivalled catalyst for NSW producers and manufacturers to **capture expanded global opportunities**.

We've been researching world best practice into global supply chains, to see who's doing it best and what we can learn from it. That research has culminated in the **ILH Airfreight Interface Concept Study** [available here](#).

The study shows we need collaboration across industry, and with government, to create shared infrastructure and facilities to optimise the benefits for agribusiness, freight and logistics industries in the NSW.

The WPCA is sharing this concept to stimulate private sector activity. Interested parties, from industry to landowners to developers and investors, are invited to share their ideas on how they can help to bring the ILH Airfreight Interface Concept to life. We are opening a **Request for Information process** to collect information from interested parties about how an efficient airfreight interface could work and to **help connect future investors**.



A '36-hour farm gate to plate' supply chain

WSI 24/7 Cargo Precinct

The dedicated WSI Cargo Precinct is set to be operational in 2026, making it Greater Sydney's first and only 24/7 curfew-free international airport.

The new Airport and its dedicated **WSI Cargo Precinct** is planned to be operational by 2026.

A significant step forward was taken by Western Sydney Airport in May 2021, when it embarked on **Australia's first co-designed cargo precinct process**.

The process aims to bring together the air cargo community and create supply chain efficiencies that will allow Australia to connect and compete with global market.

It is clear that **momentum is building** – the Registration of Interest (ROI) process is now complete, and an Expression of Interest (EOI) process to secure tenants and customers in the Precinct is underway.

Stage 1 of the WSI Cargo Precinct will facilitate the movement of **220,000 tonnes of cargo** annually through approximately 75,000 sqm of cargo terminals that are designed to grow in a modular format without interrupting cargo (or passenger) operations.



WSI construction site



Air Cargo Precinct

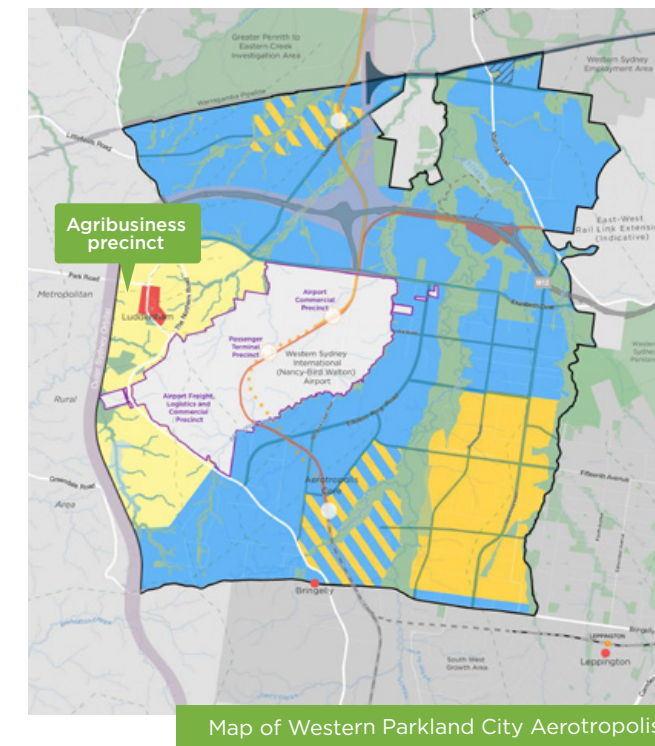
What is the 'Integrated Logistics Hub Airfreight Interface Concept'?

The ILH Airfreight Interface Concept aims to accelerate speed-to-market connectivity to local and global markets for NSW agribusinesses, producers and manufactures.

First, what is the Integrated Logistics Hub (ILH)?

We shared our work on an **Integrated Logistics Hub (ILH) Scoping Study** in July 2020 (Deloitte), [which is available here](#). Through extensive industry engagement the ILH Scoping Study helped us understand the scale of the **opportunity to transform Western Sydney into a global freight and logistics powerhouse**. This work identified that up to 300 hectares of freight and logistics operations in the Western Parkland City may be required for the long-term future of an ILH. An ILH is included in the draft planning framework for the Agribusiness Precinct in the Aerotropolis.

As with any major global gateway – airport or port operation – there is a need for ancillary services and capabilities to support the land-based movement of imported and exported cargo. We have commissioned new research to develop the concept of an ILH Airfreight Interface located in the Agribusiness Precinct, in the Aerotropolis, and serviced by the Northern Road, providing access to the WSI Cargo Precinct exit and entry point.



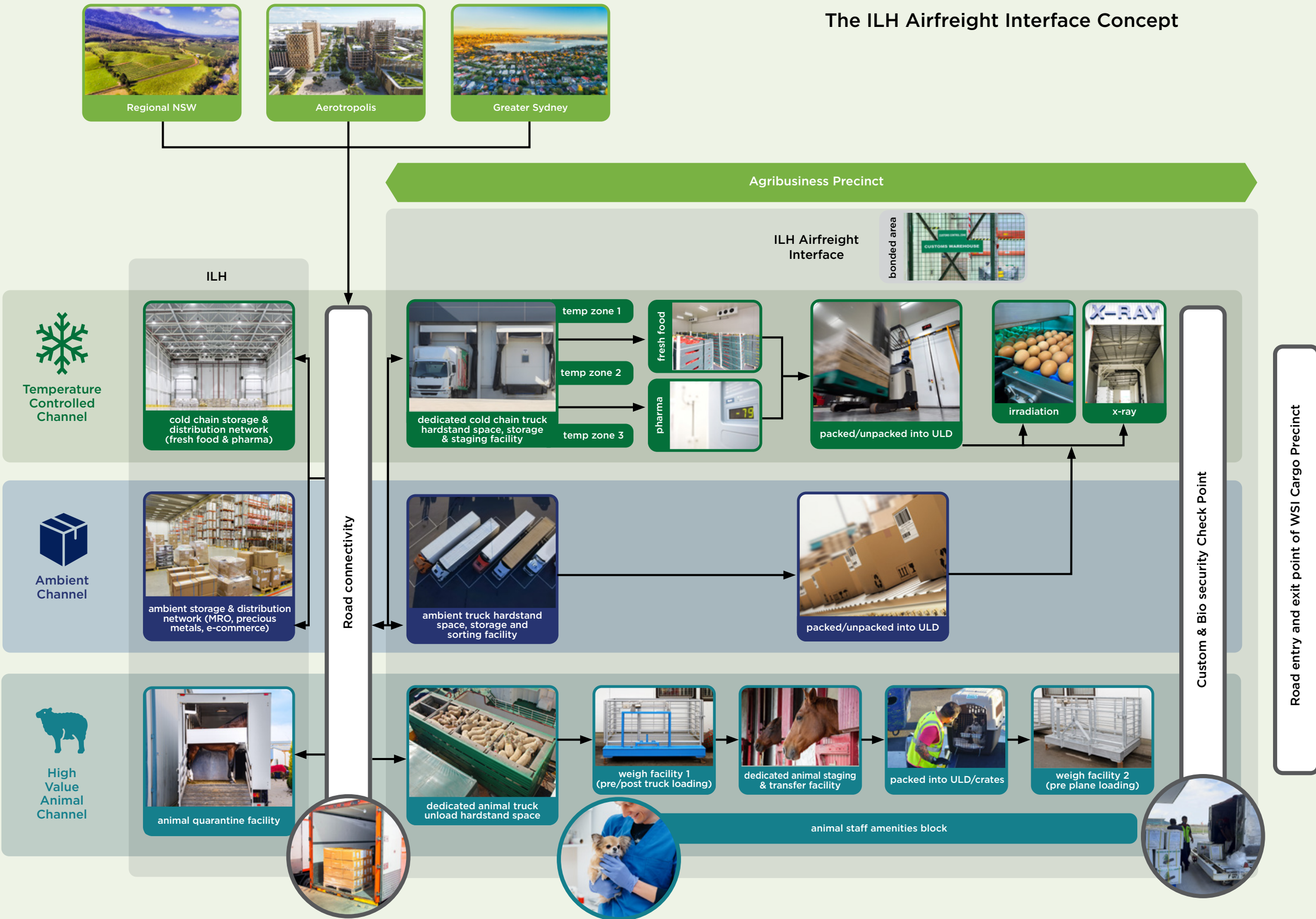
The ILH Airfreight Interface Concept

The ILH Airfreight Interface Concept **contemplates what is needed to connect the broader landside ILH network envisaged in the Aerotropolis' Agribusiness Precinct to the entry and exit point of the airside WSI Cargo Precinct, its tenants and customers.**

To **unlock the full potential** of the 24/7 curfew-free Airport, and based on world-leading international examples, this means:

- the concept envisages what is needed to **seamlessly connect** the broader landside ILH logistics network **to the entry and exit points** of the WSI Cargo Precinct tenants, customers and airside operations
- dedicated and specialised facilities and processes** for shared use by businesses across New South Wales, that can best **optimise first and last mile** airfreight movements for **cold chain, ambient and live commodities**.





Airside access via WSI Cargo Precinct customers and tenants



How to get involved

We are engaging with interested parties until **mid 2022**. We launched our **ILH Airfreight Interface Concept Request for Information (RFI)** at the 'Tomorrow's City Today: Opportunities in the Bradfield City Centre' event held on 8th October 2021.

We now invite you to take part in the **RFI**, **closing 8th December 2021**, and then subsequent events so we can work together to **explore how the ILH Airfreight Interface Concept** is best brought to life.

Everything you need to know about participating in the RFI is [available here](#).

We look forward to continuing to work with all interested parties who are in a position to help build a world-class airfreight supply chain operation.

Together, we can boost our valuable export trade, right here in the new Aerotropolis, Western Parkland City and New South Wales, Australia.

For more details email us at rfi_agri@wpca.sydney.



OCTOBER 2021

Agribusiness, Freight and Logistics Forum and RFI Launch



DECEMBER 2021

RFI Submissions are submitted to the Western Parkland City Authority



EARLY 2022

Western Parkland City Authority:

- shares insights from the RFI with all participants and the wider community
- invites all participants in the RFI to a subsequent event to support industry and landowner connections to advance ideas of mutual interest



MID 2022+

Western Parkland City Authority continues to work with participants and/or registered parties to facilitate connections between these parties

C O N T A C T

Email: rfi_agri@wpca.sydney

LinkedIn: Western Parkland City Authority

Facebook: Western Parkland City Authority

Instagram: @western.parkland.city

Web: wpca.sydney

