

New Education & Training Model (NETM)

An industry-led model to build
your future workforce



Acknowledgement of Country

The Western Parkland City Authority acknowledges more than 60,000 years of continuous Aboriginal connection to the land that makes up New South Wales.

Since time immemorial, Aboriginal people have managed, cultivated and cared for the landscape where Greater Sydney was established and continues to grow. Aboriginal people hold profound knowledge, understanding, obligation and custodianship of the landscape.

The Western Parkland City Authority acknowledges the traditional owners of the lands that include the Western Parkland City and the living culture of the traditional custodians of these lands.

Foreword

The New Education and Training Model is a game-changer in the way that we deliver education and training across Australia.

The NSW Government has announced a major new education and training model for the Western Parkland City.

The model will initially fund in full the development and delivery of a series of micro-credentials on behalf of industry through a broad array of education and training providers. This will offer learners the flexibility to stack micro-credentials in a way that supports their career goals, while working and learning at the same time.

This is going to be transformative for Australia, as the world's leading high-tech companies will be coming to Western Sydney for the skilled workforce; and as a result, people in Western Sydney will have access to new high-paying tech jobs in these new industries. It is a huge opportunity for NSW as large companies make Western Sydney their growth hub for the Asia-Pacific and Indo-Pacific regions.

Jennifer Westacott AO
Chair, Western Parkland City Authority



Strategic context

The Western Parkland City (WPC), is being planned as the most connected, green and advanced city in the Indo-Pacific.

The Bradfield City Centre will be a hub for advanced manufacturing, an ecosystem of industry and innovation, with a focus on aerospace, space and defence industries. A technologically advanced, digitally enabled city, home to emerging and evolving industries and alive with opportunities for research, development, creation and growth.

Accessible, quality education is critical to the future of the Western Parkland City.

The Western Parkland City Authority (WPCA) is developing a New Education and Training Model (NETM) in collaboration with industry, universities, Vocational Education and Training (VET) providers and government.

This will ensure that as we attract new industry and create skilled new jobs, our current and future citizens have the skills and training they need to take advantage of the opportunities. The NETM will give businesses the confidence to invest and create jobs, knowing the skilled workforce is available to achieve business objectives.

Western Parkland City



Artist impression of the Bradfield City Centre

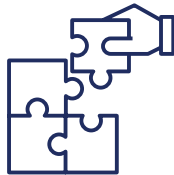


The case for change

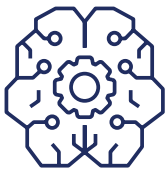
Working with our stakeholders, we have identified opportunities to design, develop and deliver high-quality, accessible and fit-for-purpose training and education in the Western Parkland City.

This includes:

Evaluating the impact of micro-credentials that span vocational, higher education and on-the-job learning, as part of an innovative approach to addressing skills gaps



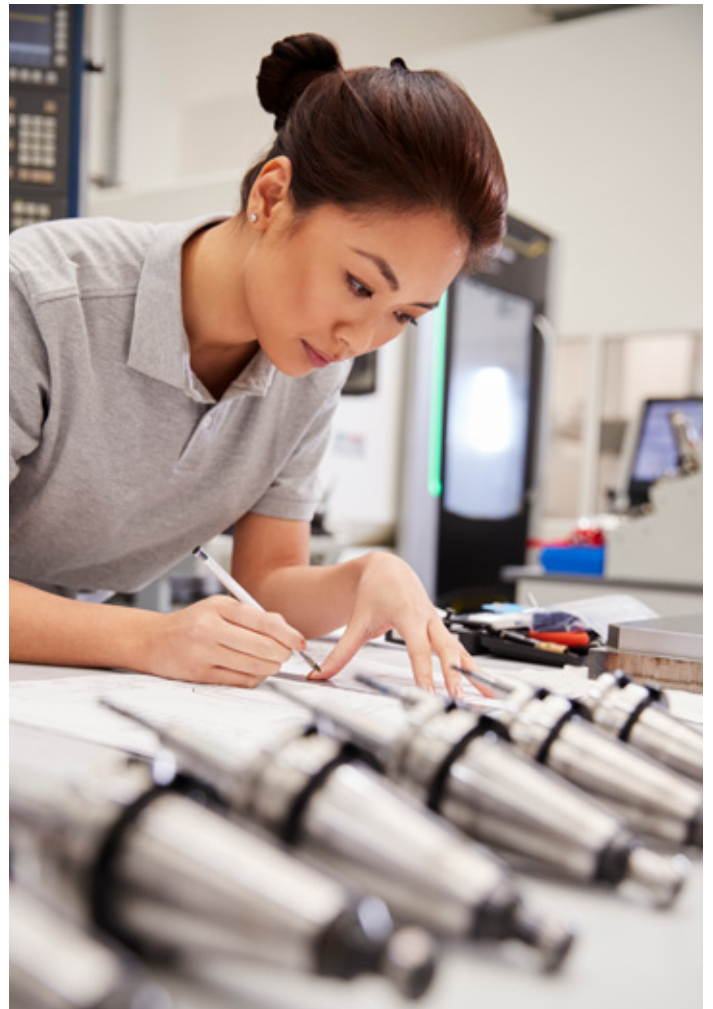
A focus on training and skills for advanced industries



Investigating options for lifelong skills development, training, and recognition



This industry-led training model will adopt a micro-credential-based approach, delivering small-scale credentials that demonstrate skills, knowledge, and/or experience in a given subject area or capability.

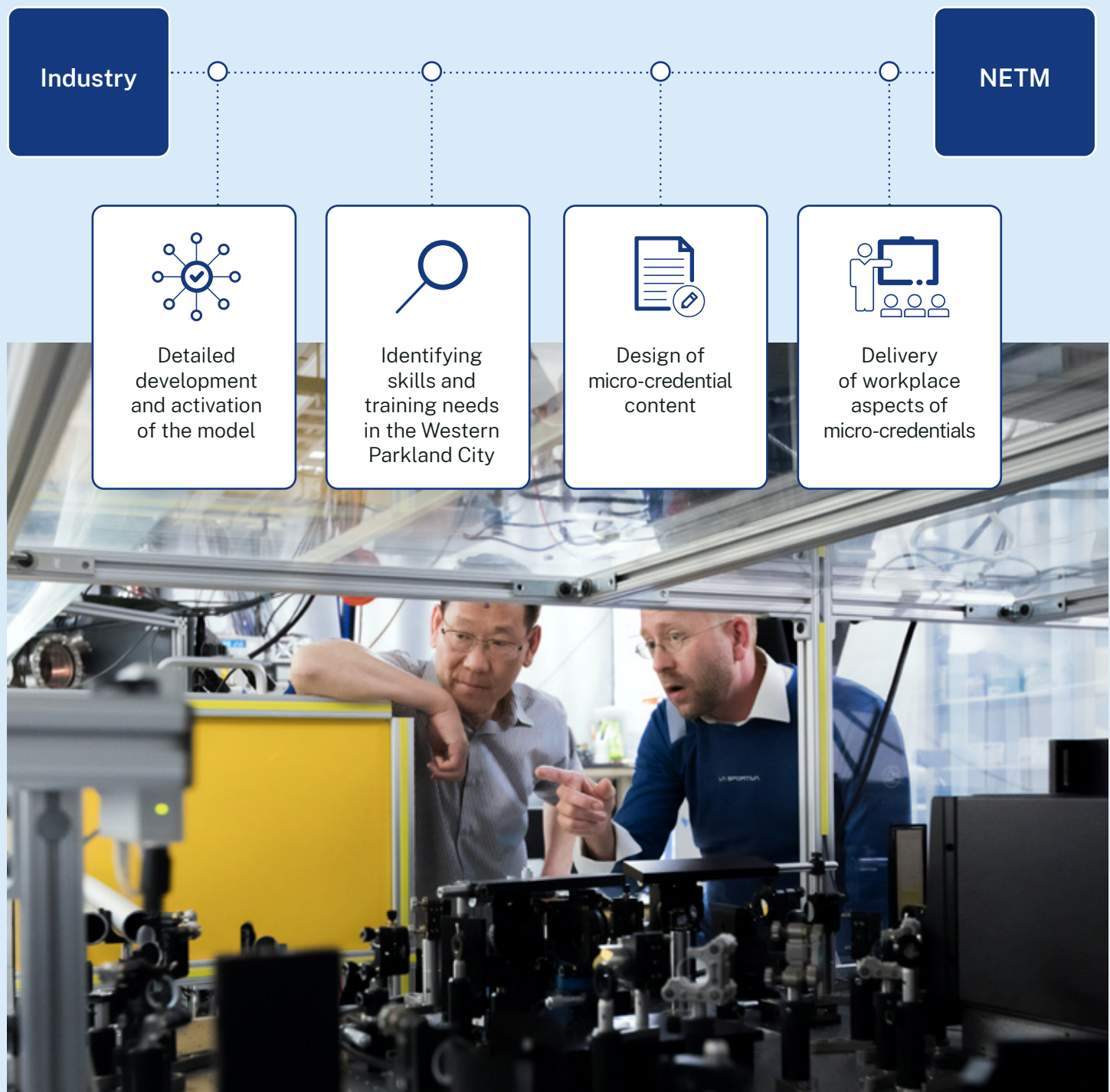


Micro-credentials offer quick, accessible, and targeted training in areas of skill need that can be tailored to suit the evolving needs of businesses. Key features embodied in the NETM include:

- **Industry-led** - content is driven, designed, and delivered by industry
- **Place-based approach** - increased availability and quality of training opportunities in growth industry sectors across the WPC
- **Cross-sectoral courses** - greater range of qualifications spanning multiple sectors and skills
- **Flexibility** - flexible entry and exit points for existing and future employees looking to upskill or develop careers
- **Stackable learning** – ability to stack micro-credentials into job-ready qualifications at the learner's pace, and in line with business objectives
- **Cost of development and delivery fully-funded by NSW Government through initial implementation phase** – no cost to learners and employers through initial phase of the model

An industry-led New Education and Training Model

Unlike more traditional forms of tertiary education, the NETM places industry in the driver's seat, to ensure training and education are designed for business and to support a pipeline of skilled local workers, well into the future. Industry is involved in:



Examples of learning pathways through the NETM



John, 28, is a Production Engineer at Company X, a leading composite component manufacturer for the aerospace and defence sectors. He has shown strong performance and leadership potential for the company.

In his most recent performance discussion, John agreed with his manager to develop his skills and experience in robotics, with a goal to move into an Automation Lead role within the next 12-18 months.

Under the NETM, John is able to undertake a micro-credential in Robotics Design at one of our partner universities. He then undertakes a special project within the Company on validation and testing of a new robotics capability, which constitutes an additional set of applied micro-credentials in his skills passport.

His new credentials support him in being promoted into the Automation Lead role.



Olivia, 41, has been working as a bookkeeper in Western Sydney for 15 years. She is interested in freight and logistics due to the uptake in e-commerce, but holds no qualifications and worries she will struggle to change jobs.

Under the NETM, Olivia is able to easily find information about the emerging freight and logistics skills that local employers in the area are seeking.

She undertakes a block-chain introduction micro-credential at a leading VET provider to ensure she has foundational skills. She then undertakes two additional automated logistics micro-credentials through a partner university which leads to a work-based micro-credential with a local blockchain infrastructure building company.

Armed with new skills and proof of her attainment in her skills passport, Olivia secures a new job in the Finance team of a leading WPC logistics firm.

Industry Reference Group (IRG)

The NETM pilot micro-credential offerings, key industry milestones and priorities are guided by the IRG, which currently comprise the following members:



Education and Training Providers Panel (ETPP)

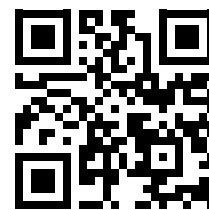
The ETPP brings together a group of prequalified Registered Training Organisations (RTOs) and Higher Education Providers (HEPs) who have proven capacity and capability to deliver innovative, high-quality learning in close collaboration with industry partners. The following panellists were successfully appointed on to the inaugural ETPP:



Want to learn more?

We invite industry members in advanced manufacturing, pharmaceuticals, transport and logistics, defence and aerospace, and agribusiness sectors to participate in the ongoing design, development and delivery of micro-credentials tailored to the needs of employers in the Western Parkland City.

NETM Contact: netm@wpca.sydney



scan to learn more

Western Parkland City Authority

T: 1800 312 999

E: netm@wpca.sydney

W: wpca.sydney/netm

